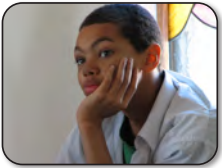




- **Kitchen and Dining Facility**

A centralized and updated kitchen and dining area will allow for expanded meal service to community youth attending the campus school and help the students learn to socialize in larger groups.

*Currently, to comply with new regulations, the campus has centralized cooking to one of the five cottages and transports all the meals to the other cottages. The small and outdated kitchen is not equipped to produce the number of meals necessary and food is vulnerable to temperature changes during transportation, often by wagon. The children then eat in tiny kitchen areas of their cottages or in classrooms.*



- **Four Classrooms**

Four new classrooms, all centrally located, will reduce crowding, chances for distraction and loss of control as students move between classrooms.

*Currently, several of the classrooms and school office spaces have been modified from former hallways and tool sheds scattered across campus. Existing classrooms are so small that desks are pushed up against each other.*

- **Behavioral Focus Room**

A behavioral focus room, adjacent to the behavioral interventionist, will allow several students to retreat to a supervised quiet and calming space when they become overwhelmed.

*Currently, the "refocusing area" is in a cramped room that does not allow for quiet or private space to calm down and regroup before returning to class.*

- **Four Offices**

Centralized office spaces will bring together the principal, secretary, behavioral interventionist and school liaison so they can be close to the students where they are needed to provide support.

*Currently, the key behavioral and administrative staff occupy cramped offices distant from their students and not all of these offices are private.*

- **Four Bathrooms**

New bathrooms will allow for more privacy and help the youth in Dodge City feel more secure.

*Currently, the bathrooms are small and next to the classroom so there is little privacy.*

- **Storm Shelter**

The addition of a storm shelter will assure the safety of all campus children and staff.

*Currently, there is no storm shelter to protect everyone in case of bad weather. In an area 40 miles from Greensburg where a tornado leveled an entire city, there is a real threat to the safety of the campus children and staff when storms occur.*

